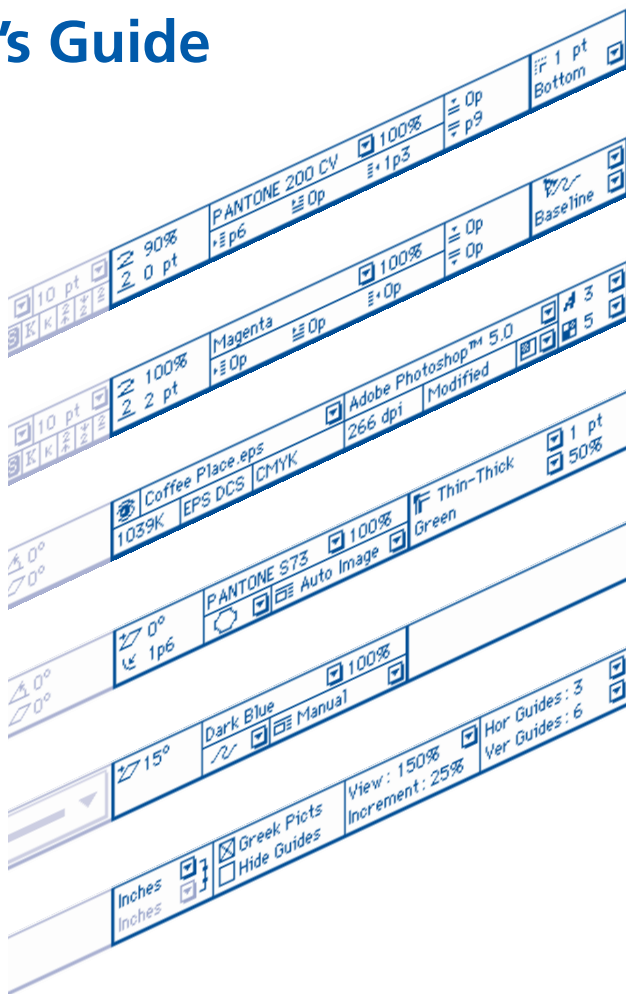


Badia FullMeasure XT 2.0

Get instant access to nearly 60 additional features with this extended Measurements palette.

User's Guide



Badia FullMeasure XT 2.0

User's Guide

Badia FullMeasure XT 2.0

Copyright ©1998-99 by Badia Software. All Rights Reserved. No part of this book, including design, may be reproduced or transmitted in any form, by any means (electronic, photocopying, recording, or otherwise) without the prior written permission of Badia Software.

Portions Copyrighted 1988–1998 Quark Technology Partnership. All Rights Reserved. Badia FullMeasure XT is for use with Mac OS QuarkXPress version 4.03 or higher, for the English language, and can only be used with a valid, registered copy of QuarkXPress.

Liability: The information in this book and the computer software are distributed on an “As Is” basis, without warranties or guarantees of any kind. While every precaution has been taken in the preparation of this book, Badia Software shall have no liability to any person or entity with respect to any loss or damage caused or alleged to be caused directly or indirectly by the instructions contained in this book or by the computer software described in it.

Quark, QuarkXPress, QuarkXTensions and XTensions are trademarks of Quark, Inc. and all applicable affiliated companies, Reg. U.S. Pat. & Tm. Off. and in many other countries. The Quark logo and the XTensions logo are trademarks of Quark, Inc. and all applicable affiliated companies. Mac OS is a trademark of Apple Computer, Inc. All other trademarks are the properties of their respective owners.

Editing: Ian Scott

Beta testing: Achille Lombardi, Tom Lamers, Joshua Faigen

The following disclaimer is required by Quark, Inc.:

QUARK, INC. MAKES NO WARRANTIES, EITHER EXPRESS OR IMPLIED, REGARDING THE ENCLOSED SOFTWARE PACKAGE, ITS MERCHANTABILITY, OR ITS FITNESS FOR ANY PARTICULAR PURPOSE. QUARK DISCLAIMS ALL WARRANTIES RELATING TO THE ENCLOSED SOFTWARE PACKAGE. ALL OTHER WARRANTIES AND CONDITIONS, WHETHER EXPRESS, IMPLIED, COLLATERAL, MADE BY THE DISTRIBUTORS, RETAILERS OR DEVELOPERS OF THE ENCLOSED SOFTWARE ARE DISCLAIMED BY QUARK, INCLUDING WITHOUT LIMITATION, NON-INFRINGEMENT, COMPATIBILITY, OR THAT THE SOFTWARE IS ERROR-FREE, OR THAT ERRORS CAN OR WILL BE CORRECTED. SOME JURISDICTIONS, STATES, OR PROVINCES DO NOT ALLOW LIMITATIONS ON IMPLIED WARRANTIES, SO THE ABOVE LIMITATION MAY NOT APPLY TO PARTICULAR USERS.

REGARDLESS OF WHETHER ANY REMEDY FAILS OF ITS ESSENTIAL PURPOSE, IN NO EVENT SHALL QUARK OR ANY ENTITY WHICH CONTROLS, IS CONTROLLED BY, OR IS UNDER COMMON CONTROL OF QUARK BE LIABLE FOR ANY SPECIAL, INDIRECT, INCIDENTAL, CONSEQUENTIAL OR PUNITIVE DAMAGES, INCLUDING, BUT NOT LIMITED TO, ANY LOST PROFITS, LOST TIME, LOST SAVINGS, LOST DATA, LOST FEES, OR EXPENSES OF ANY KIND ARISING FROM INSTALLATION OR USE OF THE SOFTWARE OR ACCOMPANYING DOCUMENTATION IN ANY MANNER, HOWEVER CAUSED AND ON ANY THEORY OF LIABILITY. IN ANY EVENT, QUARK'S LIABILITY RELATING TO THE SOFTWARE SHALL BE LIMITED TO FIFTY DOLLARS (\$50) OR THE AMOUNT PAID BY USER TO QUARK, WHICHEVER IS LESS. THESE LIMITATIONS WILL APPLY EVEN IF QUARK HAS BEEN ADVISED OF SUCH POSSIBLE DAMAGES. SOME JURISDICTIONS, STATES, OR PROVINCES DO NOT ALLOW THE EXCLUSION OR LIMITATION OF INCIDENTAL OR CONSEQUENTIAL DAMAGES, SO THE LIMITATION OR EXCLUSION INCLUDED IN THIS LICENSE AGREEMENT MAY NOT APPLY TO PARTICULAR DEVELOPERS.

THIS PRODUCT WAS NOT WRITTEN OR REVIEWED BY QUARK.

Badia Software
392 Sherbourne St., Suite 802
Toronto, Ontario
Canada M4X 1K3

info@badiasoftware.com
www.badiasoftware.com

Contents

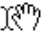
Introducing Badia FullMeasure XT 2.0	1
The FullMeasure Palette in Text and Text Path Modes	3
The FullMeasure Palette in Picture Mode	4
The FullMeasure Palette in Box and Line Modes	7
The FullMeasure Palette in Guides Mode	9

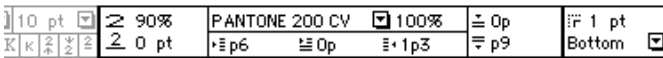
Introducing Badia FullMeasure XT 2.0

Badia FullMeasure XT 2.0 is an XTensions module for Mac OS QuarkXPress 4 that expands the Measurements palette to include additional text and paragraph attributes, picture information, item and frame characteristics, common preferences, guide placement and several other new features.

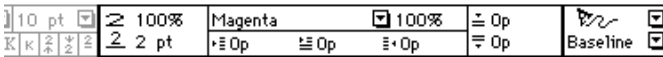
The FullMeasure palette looks and operates much in the same way as the Measurements does. In fact, this new palette is attached to the Measurements palette on the right and moves along with it. As a result, there's no need to add new menu entries or keyboard commands – FullMeasure really “extends” the Measurements palette.

The information displayed in the FullMeasure palette is grouped in six different categories or *modes* that reflect the user's current selection:

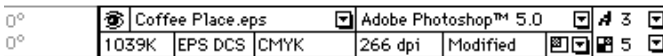
- *Text Mode* – Displayed when text within a box is selected with the Content tool .



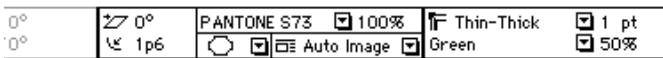
- *Text Path Mode* – Displayed when text in a path is selected with the Content tool.



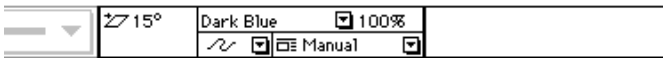
- *Picture Mode* – Displayed when a picture is selected with the Content tool.



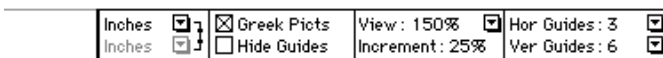
- *Box Mode* – Displayed when a box is selected with the Item tool .



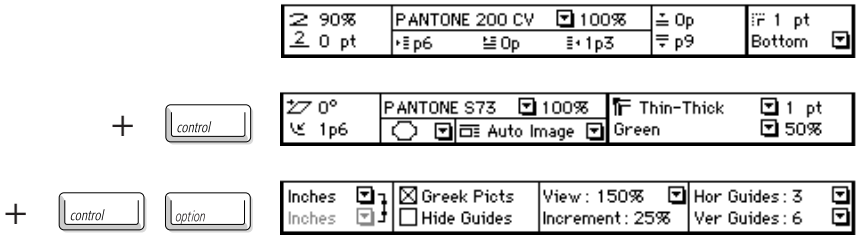
- *Line Mode* – Displayed when a line is selected with the Item tool.



- *Guides Mode* – Displayed when no object is selected with either the Content or the Item tool.



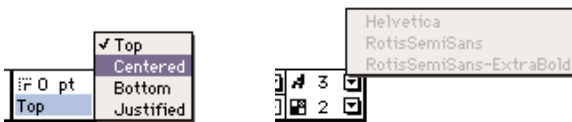
The modes change automatically when a tool or the selection changes. You can switch temporarily to the Box or Line mode by holding the `control` key, and to the Guides mode by holding both the `control` and `option` keys:



Temporary modes are displayed when you hold the control and control + option keys

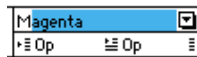
Most of the fields in the FullMeasure palette can be edited in the same way as the fields in the Measurements palette. For numerical fields, you can always enter math expressions, such as $2p4 + 5'' / 6$. You can undo any key-stroke within an editable field by pressing `⌘Z`, or you can press `⌘.` to revert to the old setting and exit the palette. To apply any changes, press the `return` or `enter` keys, or press the `tab` key to jump to the next editable field.

Several fields host a pop-up menu (▾), either indicating that a selection can be made from a list of options (for example, when choosing a color) or displaying additional information (for example, guide positions). Entries that have information only are grayed out.



Two different kinds of pop-up menus: one for a list of options and one for information only.

Editable fields that have a pop-up menu attached are also *type-and-resolve* fields – you can type the first few letters of a possible entry and the full name will be revealed. The color and vertical justification fields are examples of type-and-resolve fields.

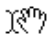


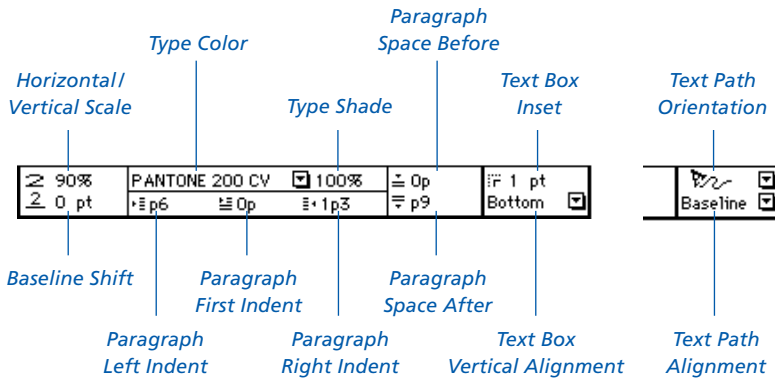
A type-and-resolve field. In this case, just typing an "M" reveals the full color name.

FullMeasure allows you to undo and redo text, paragraph and item changes just in the way you might expect it to. Press **⌘Z** or select **Edit->Undo** from the Edit menu. Press **⌘Z** again to redo the operation. Changes to preferences, views or guide settings are not undoable.

As stated before, the FullMeasure palette moves with the Measurements palette. To hide/show FullMeasure, hide/show the Measurements palette (**F9** or **View->Hide/Show Measurements**). A description of the information displayed for each mode follows.

The FullMeasure Palette in Text and Text Path Modes

When a range of text is selected with the Content tool , several additional text and paragraph attributes are shown, along with specific text box or text path information.



If the selection contains different instances of the same attribute (for example, different baseline shifts), the corresponding field will be empty. However, you can enter a new uniform value by clicking and then typing in that field.

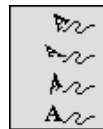
Here are the possible choices for each of the pop-up menus:



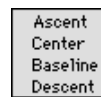
Type Color



Text Box
Vertical Alignment



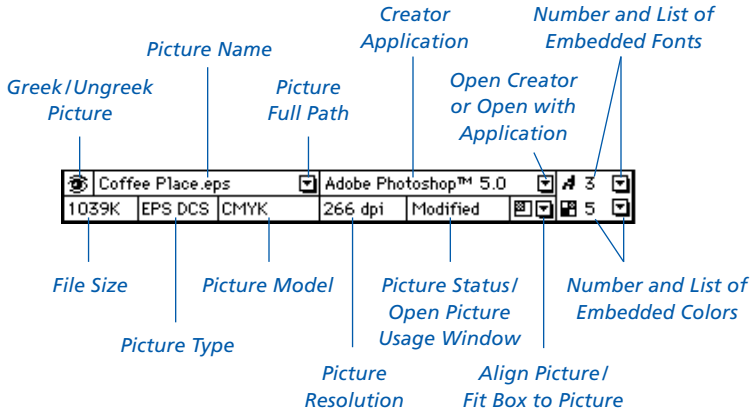
Text Path
Orientation





Text Path
Alignment

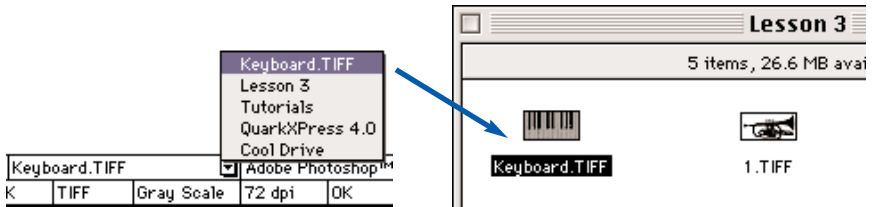
The FullMeasure Palette in Picture Mode

When you select a picture with the Content tool, a variety of picture and picture file information is displayed. The FullMeasure palette also contains tools for greeking individual pictures, for fitting the box to the picture, for opening the picture with the creator application and for revealing the enclosing folders of the linked image file in the Mac OS Finder.

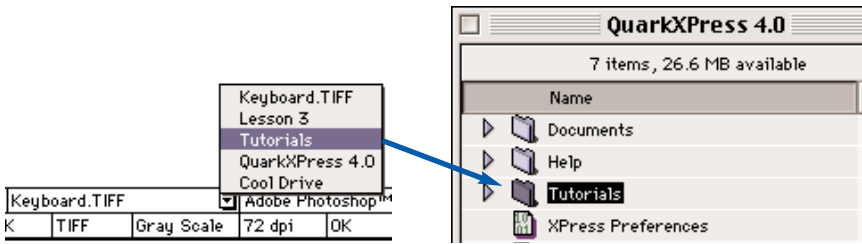


To greek the picture currently selected, click on the  icon (you must deselect the picture to see the results). The button icon changes to a closed eye icon: . Click again to ungreek it.

The picture full path pop-up menu shows the name of the linked image as well as those of its enclosing folders. If you release the mouse when a folder (or even the picture name) is selected, FullMeasure will reveal and select that item in the Finder.



You can highlight the picture icon in the Mac OS Finder by releasing the mouse in the top row of the full path pop-up menu.



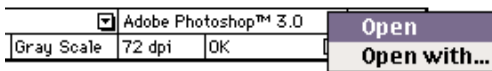
Release the mouse in any row of this pop-up menu to highlight and select in the Finder any of the picture enclosing folders.

Note: If a picture is missing, its full path will be grayed out.

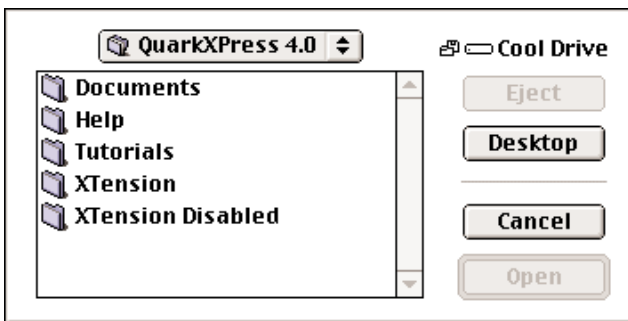
The picture type is shown as in the Picture Usage window. For DCS files, FullMeasure displays “EPS DCS” in the picture type field.

FullMeasure uses Adobe Photoshop™ standards when referring to the picture model. Thus the possible values are: Bitmap, Gray Scale, Duotone, Lab Color, Indexed Color, RGB, CMYK and Multichannel (for EPS DCS 2.0 files).

The creator application is the default application that the Mac OS Finder associates with a given file (as shown in the Kind column when viewing a folder as a list). To launch this program and open the currently selected picture, choose **Open** from the creator application pop-up menu:



To open the picture with an application other than the default creator, choose **Open with**. The following dialog allows you to browse and select the application:

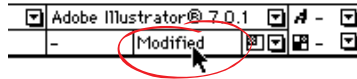


Once you select the application, it will be launched, brought to the front, and the picture will be opened with it.


The picture resolution is always displayed in dots per inch (dpi).

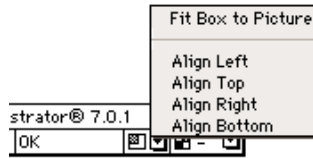
Note: FullMeasure can recognize the picture model and resolution of any TIFF file (Mac OS and PC platforms), and EPS files created with Adobe Photoshop™. All other file types are not currently supported.

The picture status is also displayed in FullMeasure. You can click anywhere within the status area to open the Picture Usage window.

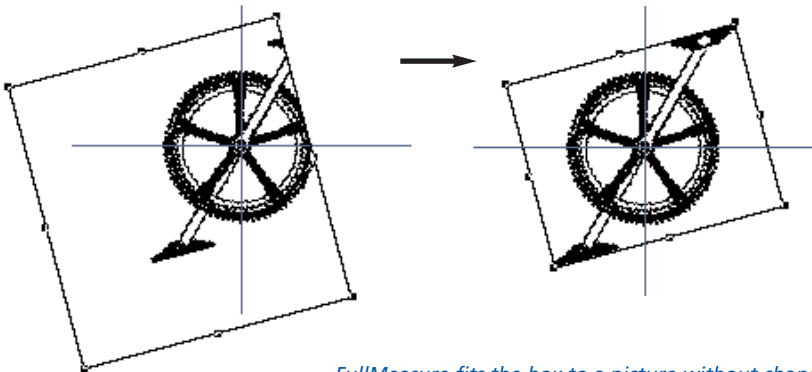


Click in the picture status area to open the Picture Usage window.

FullMeasure also gives you a powerful tool for aligning a picture within the picture box and for fitting the box to the boundaries of the picture. Click on the pop-up menu beside the  icon:



Unlike some other XTensions, FullMeasure takes into account any scale or skew applied to the picture and/or the picture box. As well, when fitting the box to a picture, FullMeasure can move *any* side of the box, so that the picture always remains in its original position in the page. And if you are not satisfied with the result, just press \mathbb{Z} to undo the operation.

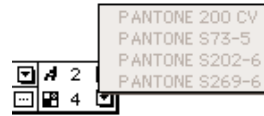


FullMeasure fits the box to a picture without changing the physical location of the picture in the page.

For files of EPS type, FullMeasure displays the number of fonts and custom colors embedded within the file (if any), along with a list of their names:



A list of EPS fonts




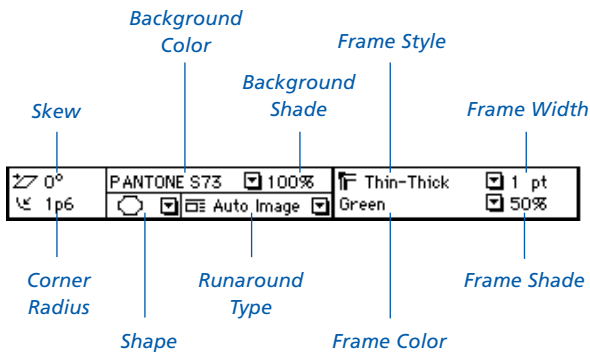
A list of EPS custom colors

A question mark (?) is shown when a value for a certain field cannot be determined, or if an error occurs. A dash (–) indicates either zero (the fonts in an TIFF file, for example) or not applicable (the resolution in a vector EPS file, for example).

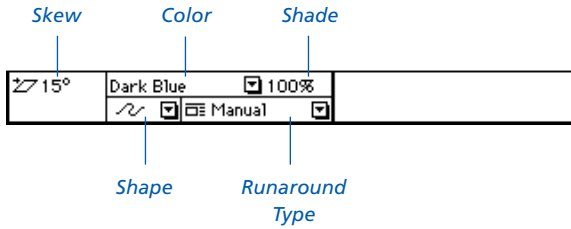
If a picture box is empty, the message “Empty Picture Box” is displayed in the picture name field. If there’s no linked image, “No Disk File” is shown.

The FullMeasure Palette in Box and Line Modes

Selecting an item with the Item tool  causes the FullMeasure palette to display item characteristics. Depending of whether it’s a box or a line, one of the following palettes will appear:



The FullMeasure palette in Box mode

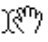


The FullMeasure palette in Line mode

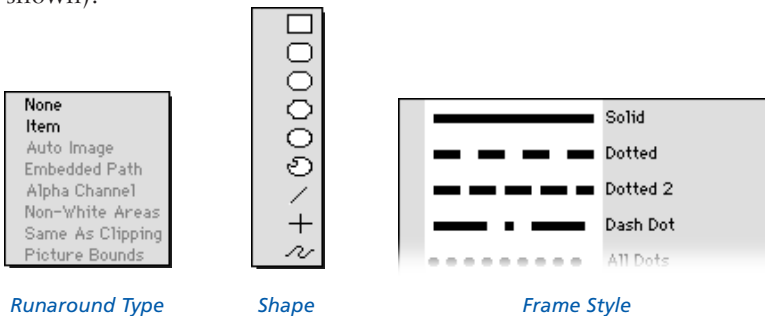
Some of the information shown is common to both boxes and lines, with the exception of corner radius and frame attributes, which are only applicable to boxes. As well, line skew is only available for Bézier lines.

Although corner radius is already part of the Measurements palette, QuarkXPress does not show this attribute for boxes of text or no contents (None), only for picture boxes. FullMeasure can show it for any kind of boxes.

Note: For items with no contents (None), the Box or Line mode is always shown, with either the Content or Item tools.

Tip: Although FullMeasure does not display information when a group of items is selected, you can still get box or line information for individual items that are part of the group by selecting the item with the Content tool  and pressing the control key.

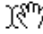
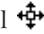
Here are the contents of the new pop-up menus (color menus are not shown):

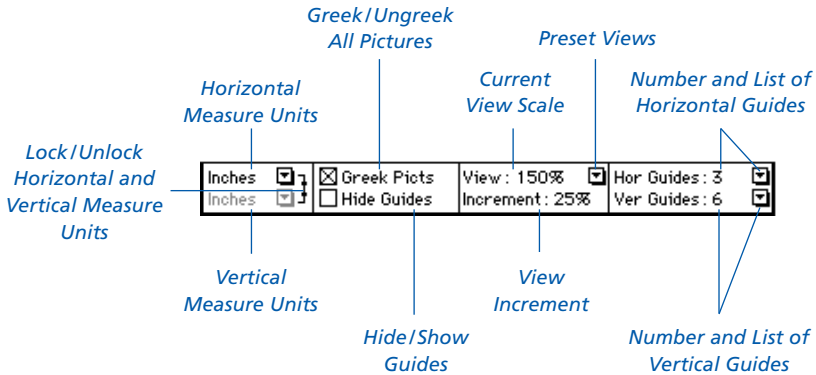




Note 1: The frame style field is not a *type-and-resolve* field.

Note 2: For picture box runaround, you can only choose the None, Item or Auto Image types with FullMeasure.

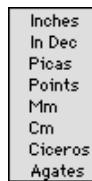
The FullMeasure Palette in Guides Mode

The last mode that FullMeasure can display is the Guides mode, presented when a document is open, the Content  or Item tool  is chosen, and no QuarkXPress object is selected. Several preferences, views and guide settings are shown.

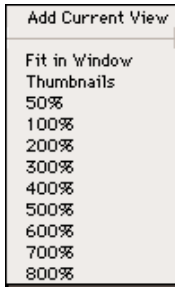


To change the horizontal or vertical measure units, type a unit in the corresponding field or use their respective pop-up menus. You can lock or unlock the horizontal and vertical measure units by clicking on the icon that connects the two fields. A  icon indicates that the units are locked – that is, changing the horizontal units will also change the vertical ones (the vertical units field and pop-up are displayed grayed out), whereas a  icon indicates that the units are unlocked.

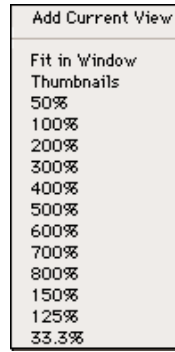
The possible units that you can choose from are:



The view pop-up menu offers preset views, plus an additional feature that allows you to save the current view for future use. Custom views are added at the end of the list and they remain available until you quit QuarkXPress.




The standard view pop-up menu with preset options

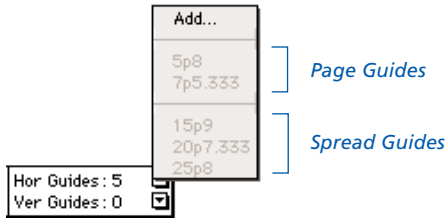


The view pop-up menu after several custom views were added using the **Add Current View** feature

Note: The view field is not a *type-and-resolve* field.

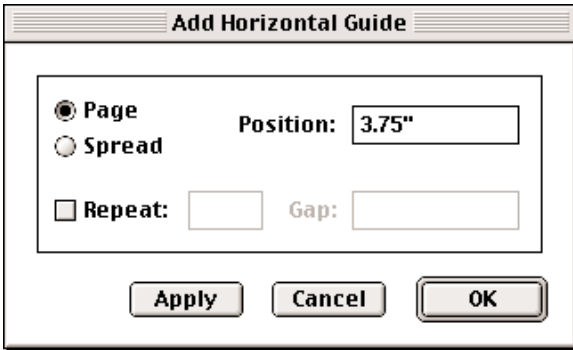
The view increment is the preference setting that determines the amount added to or subtracted from the view scale when using the Zoom tool .

FullMeasure also shows you the total number of horizontal and vertical page and spread guides. To view the exact position of each rule, click on the pop-up menus to the right of the respective fields.



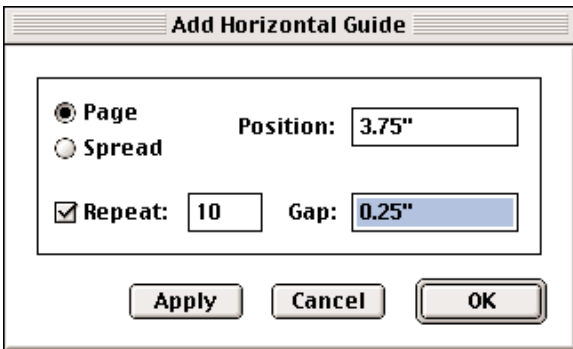
Page guides are shown at the top of the list, followed by spread guides. Horizontal rules are listed from top to bottom and vertical rules from left to right. Values displayed are always measured from the top left corner of the page, regardless of the location of the ruler origin.

A unique feature of FullMeasure allows you to place guides at a specified location, and also to step and repeat guides. You do this by choosing the **Add** option. The following dialog appears:



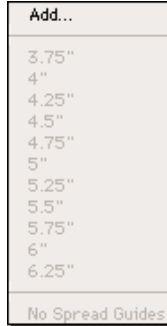
Enter an appropriate value in the `Position` field and select whether you wish to add a page or a spread guide. Click `Apply` to test the result, `OK` to add the guide or `Cancel` to close the dialog without adding any guide. As mentioned before, values are measured from the top left corner of the page.

To step and repeat guides, click the `Repeat` check button. Two new fields become available. The first field contains the number of steps; the second one, the gap or distance between guides. The first guide will be placed at the location indicated in the `Position` field, followed by as many guides as indicated in the `Repeat` field.



In this example, the horizontal page guides will be placed at the following positions: 3.75", 4", 4.25",... 6.25".

After you click OK, you can open the horizontal guides pop-up menu. It may look something like this:



Note: You cannot add single page or spread guides that fall outside the appropriate boundary limits. However, when step and repeating guides, FullMeasure will place as many guides as it can, without reporting any error for the ones that cannot be placed.

If you have any questions, or would like to comment about FullMeasure XT, please visit our web site at www.badiasoftware.com or send us an e-mail at info@badiasoftware.com

Badia Software
392 Sherbourne St., Suite 802
Toronto, Ontario
Canada M4X 1K3

info@badiasoftware.com
www.badiasoftware.com

